

How to Splice Log Curves in GVERSE Petrophysics?

GVERSE Petrophysics

GVERSE GeoGraphix Support

Muhammad Hamza Sajid

July 1, 2020

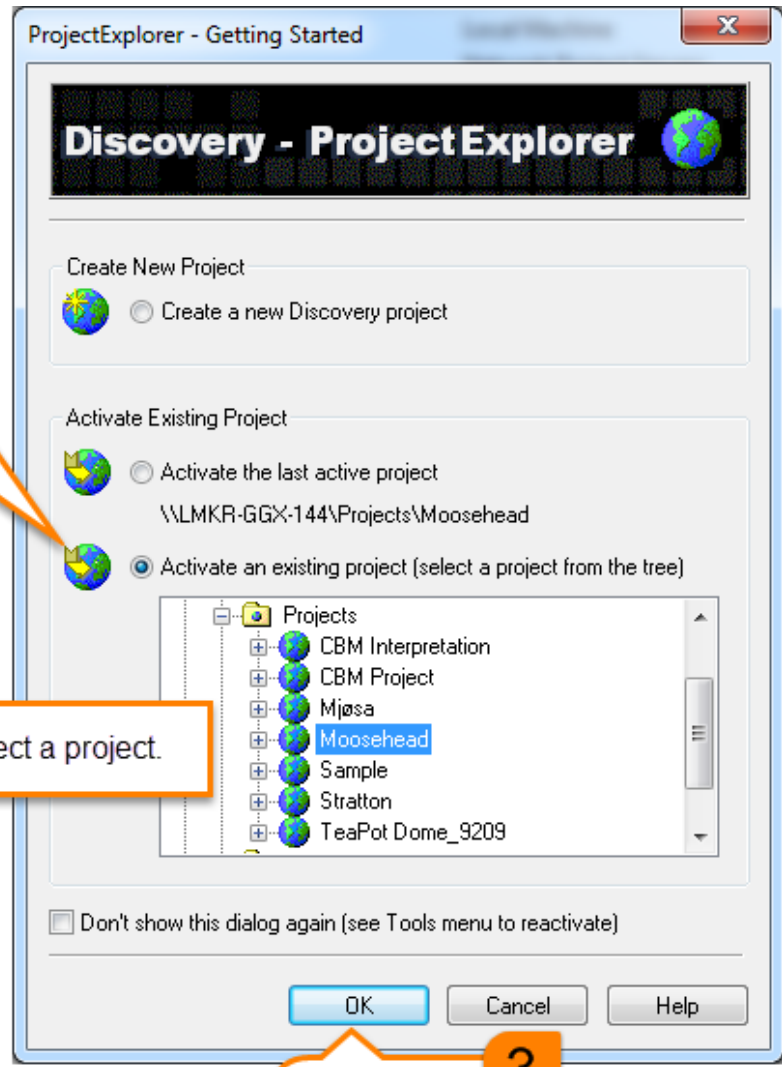


How to Splice Log Curves in GVERSE Petrophysics?

1 Select the **Activate an existing project** radio button from the **ProjectExplorer-Getting Started** dialog box. This dialog box displays when you start ProjectExplorer.

2 Select a project.

3 Click **OK**.



How to Splice Log Curves in GVERSE Petrophysics?

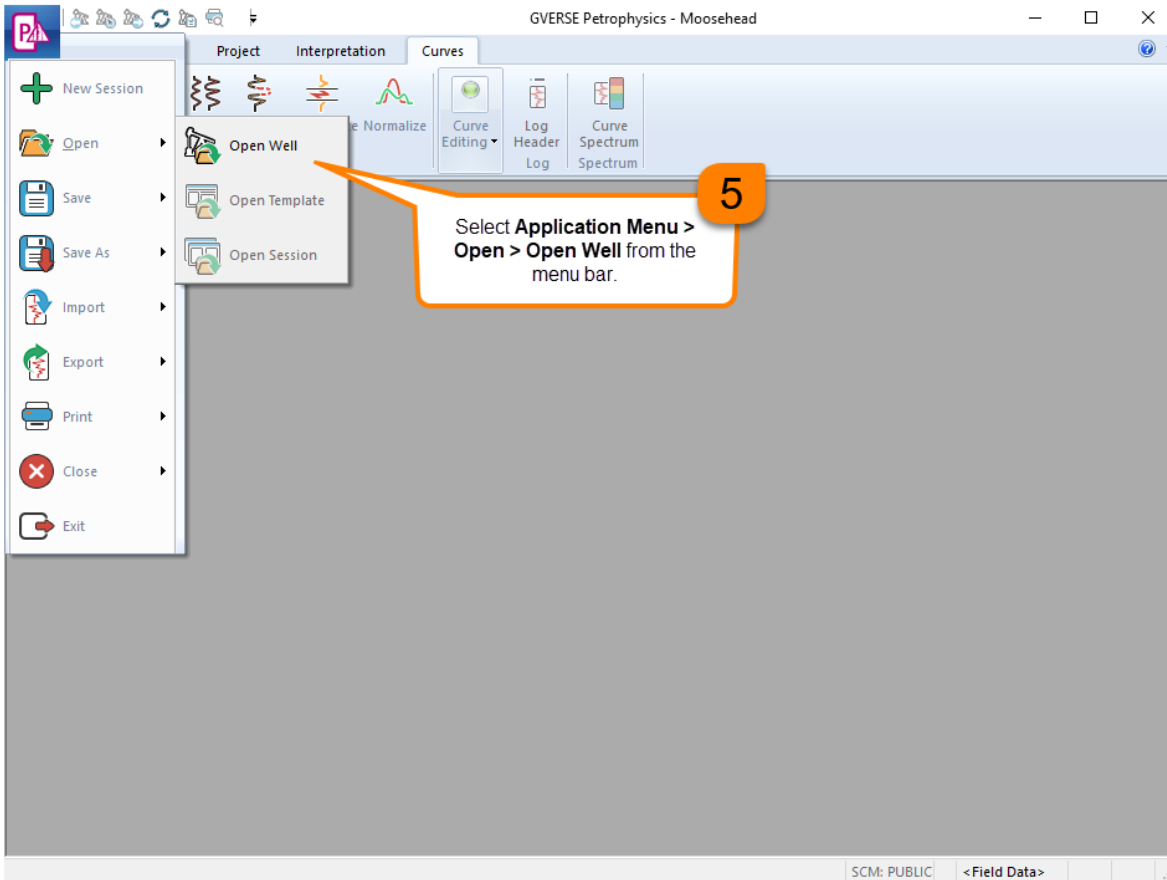


4

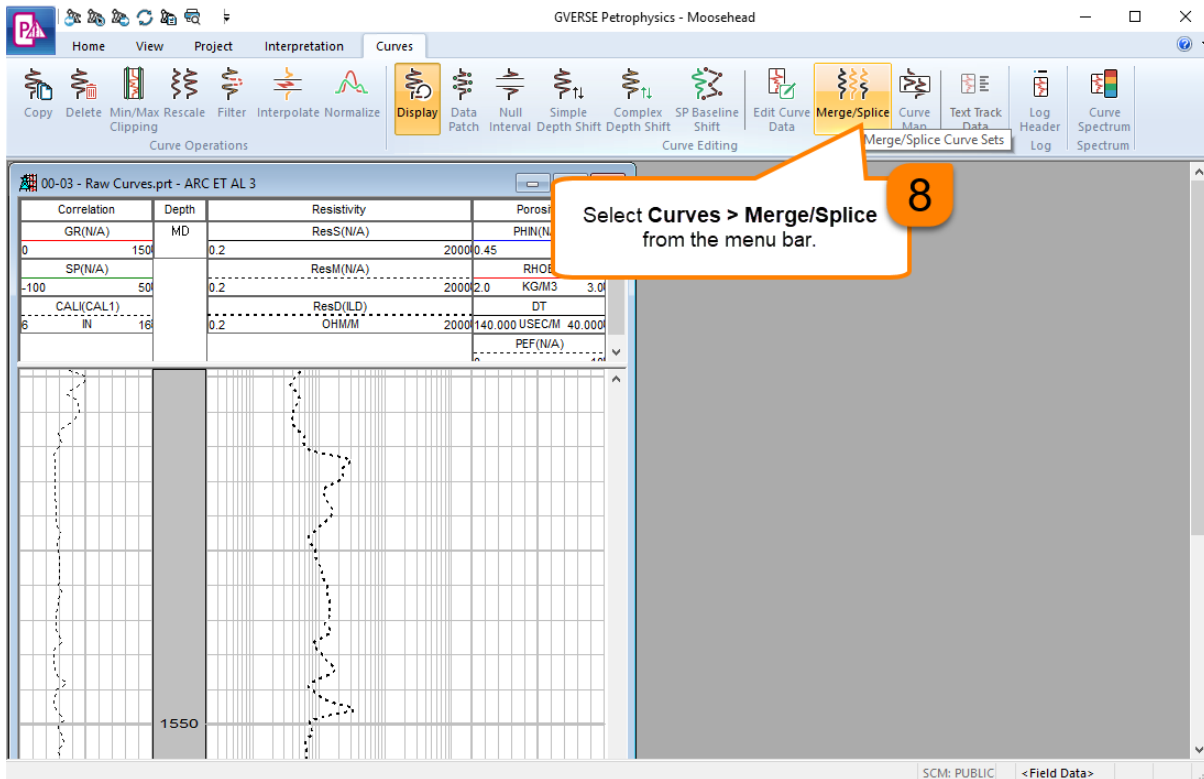
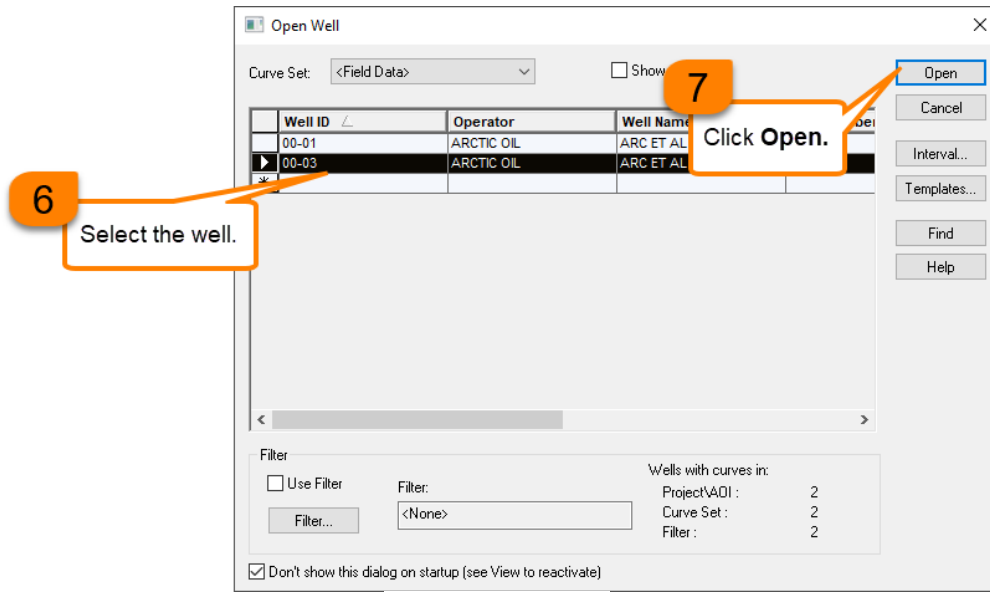
Click on the **GVERSE Petrophysics** icon on the **ProjectExplorer** toolbar to launch it.



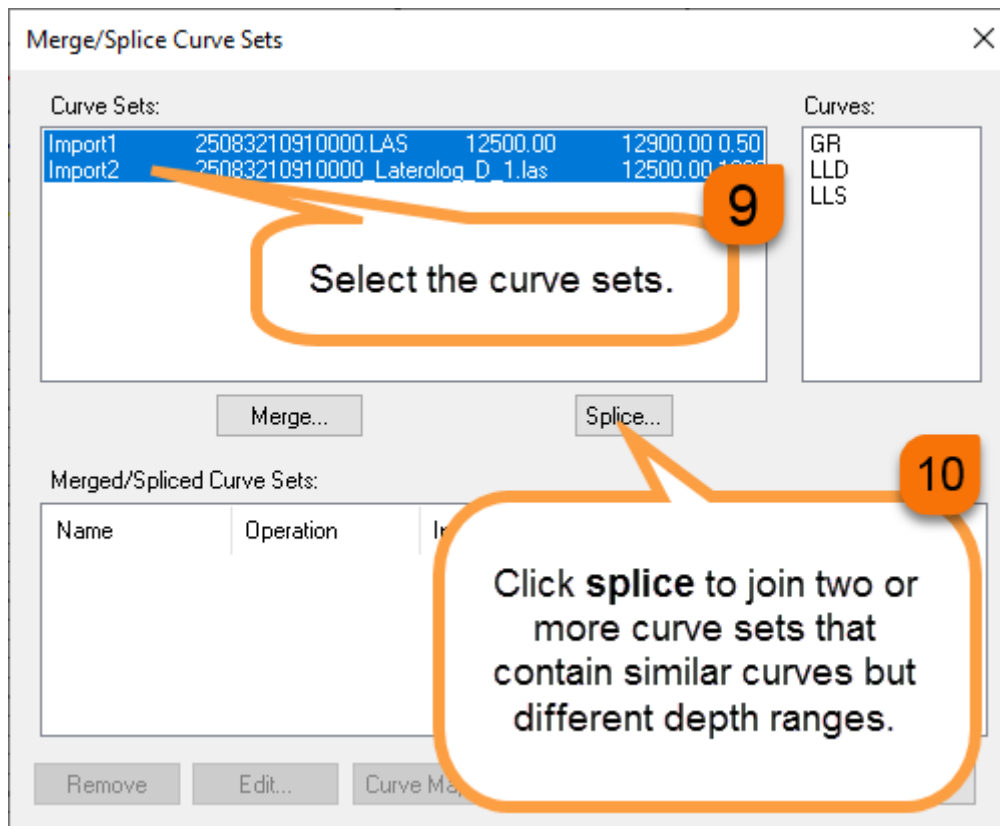
How to Splice Log Curves in GVERSE Petrophysics?



How to Splice Log Curves in GVERSE Petrophysics?



How to Splice Log Curves in GVERSE Petrophysics?



How to Splice Log Curves in GVERSE Petrophysics?

11 Enter a name for the curve set.

12 Edit the splice depth as desired.

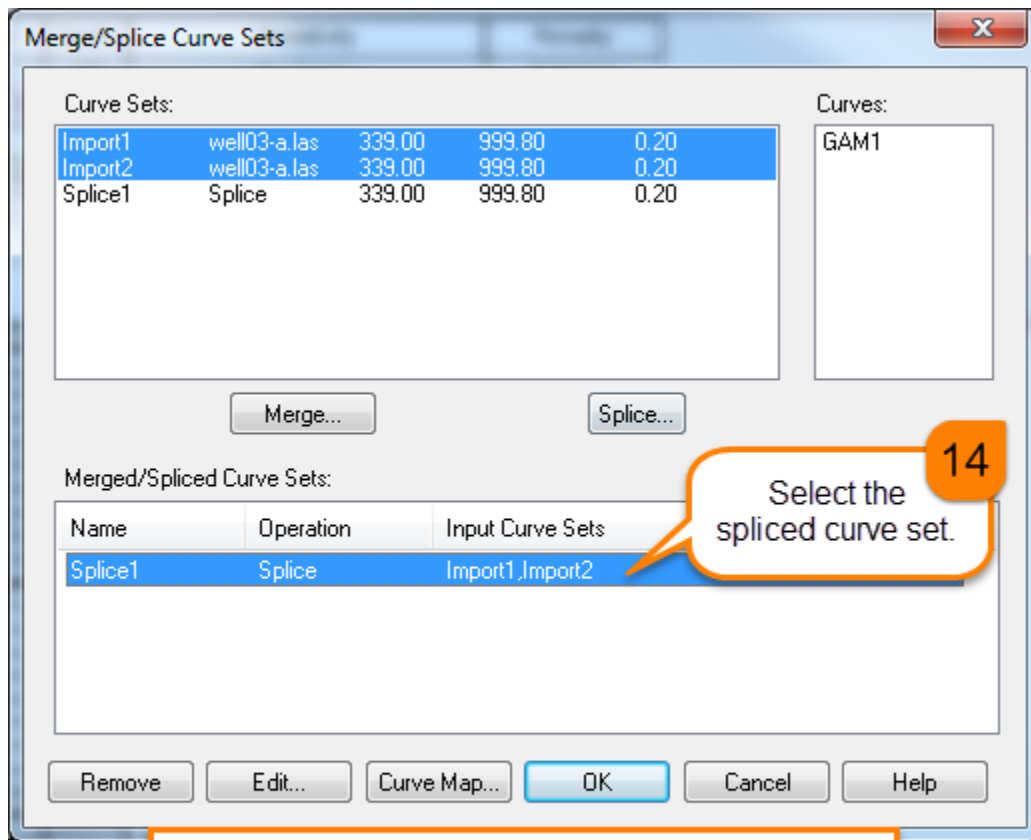
13 Click OK.

Curve Set	Splice Depth	Start	Stop	Step
Import1	-999.250	339.000	999.800	0.200
Import2	900.000	339.000	999.800	0.200

Note: You can add or remove the curve set using the Add or Remove buttons. You can also edit the start depth, stop depth, and step length of the curve point in the **Start**, **Stop**, and **Step** fields.



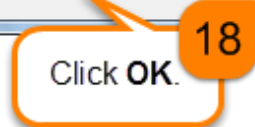
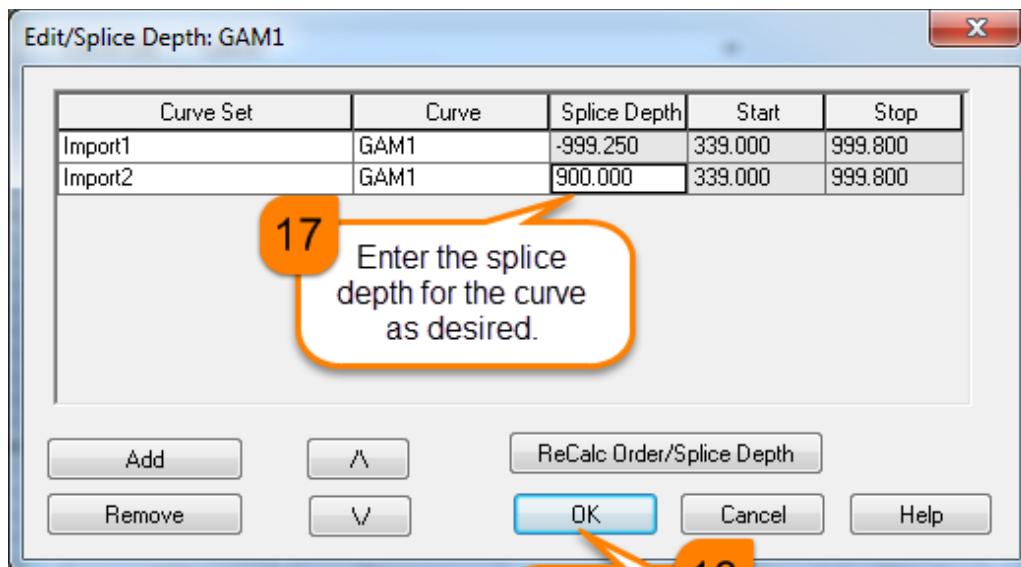
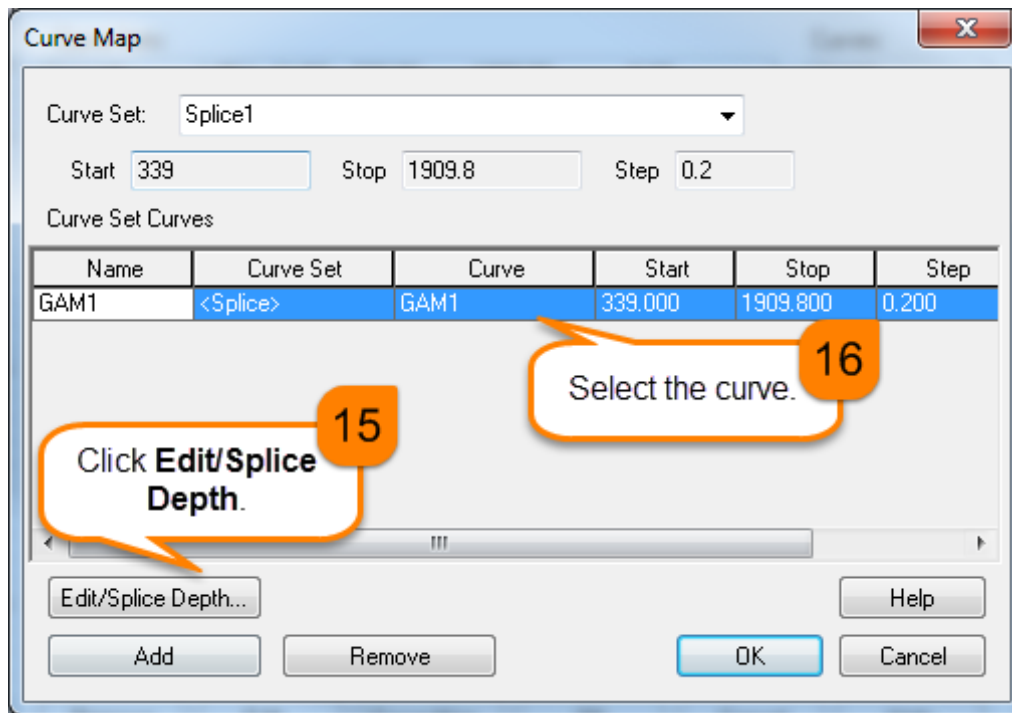
How to Splice Log Curves in GVERSE Petrophysics?



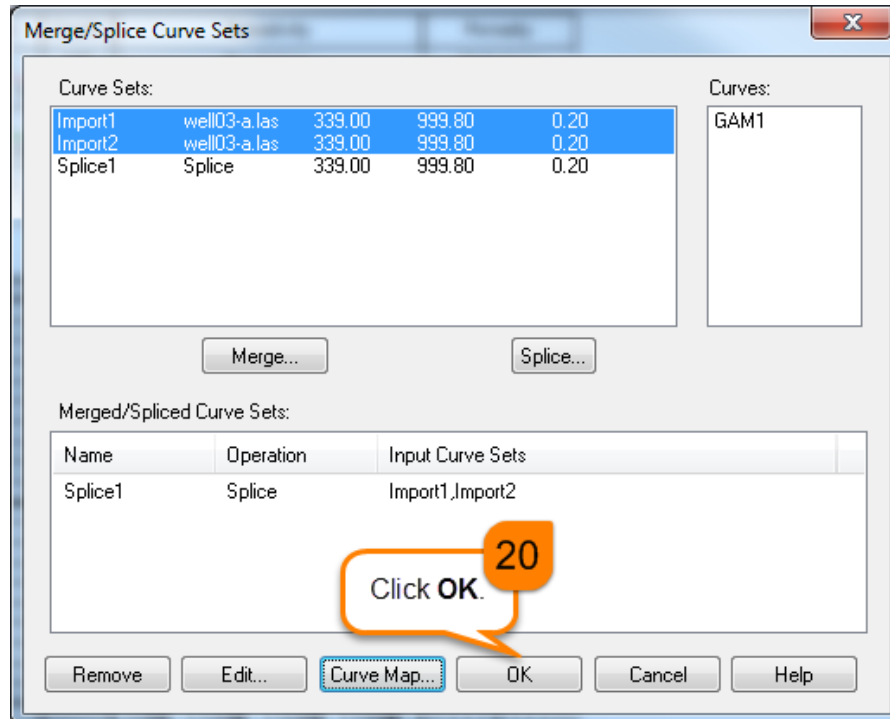
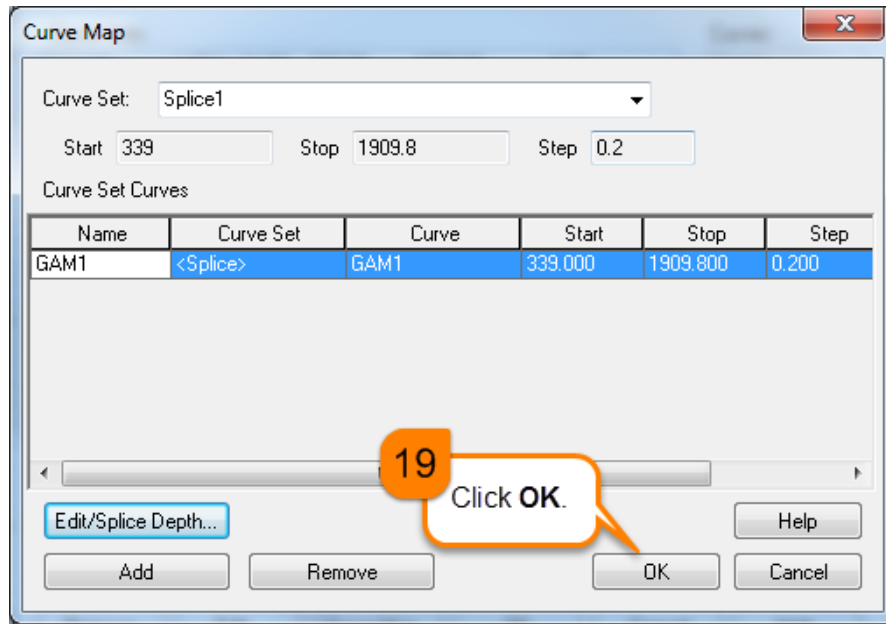
Note: You can also edit the splice depth for an individual curve by clicking the **Curve Map** button.



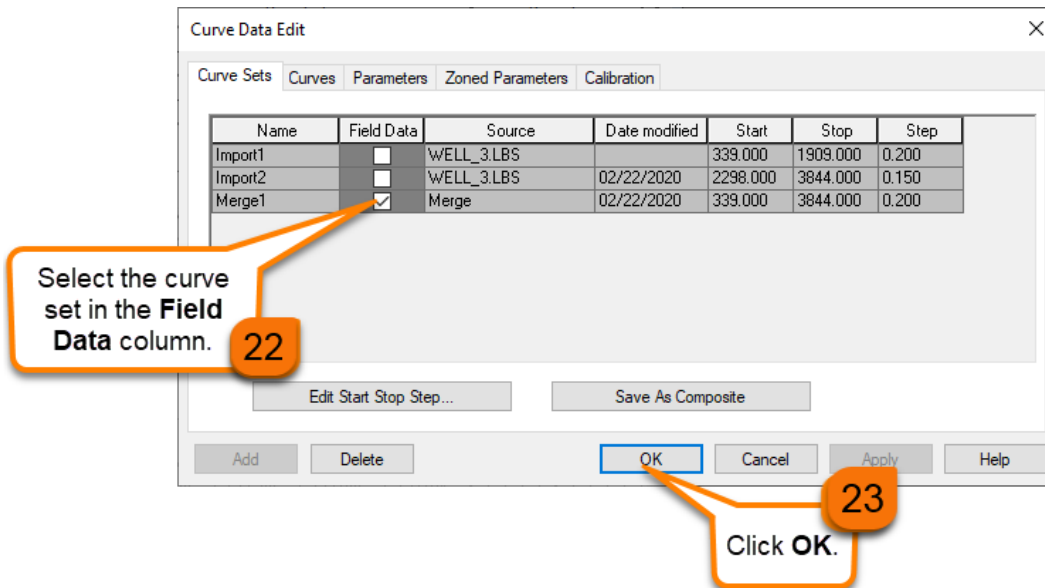
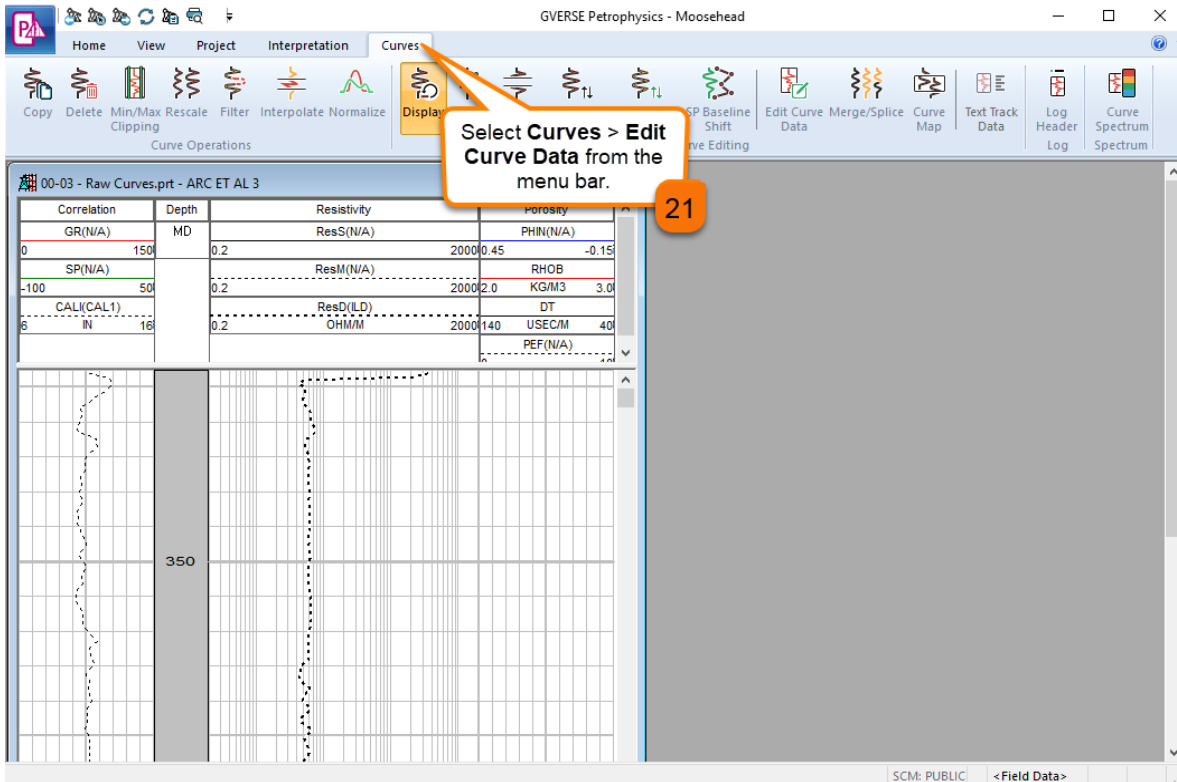
How to Splice Log Curves in GVERSE Petrophysics?



How to Splice Log Curves in GVERSE Petrophysics?



How to Splice Log Curves in GVERSE Petrophysics?



How to Splice Log Curves in GVERSE Petrophysics?

